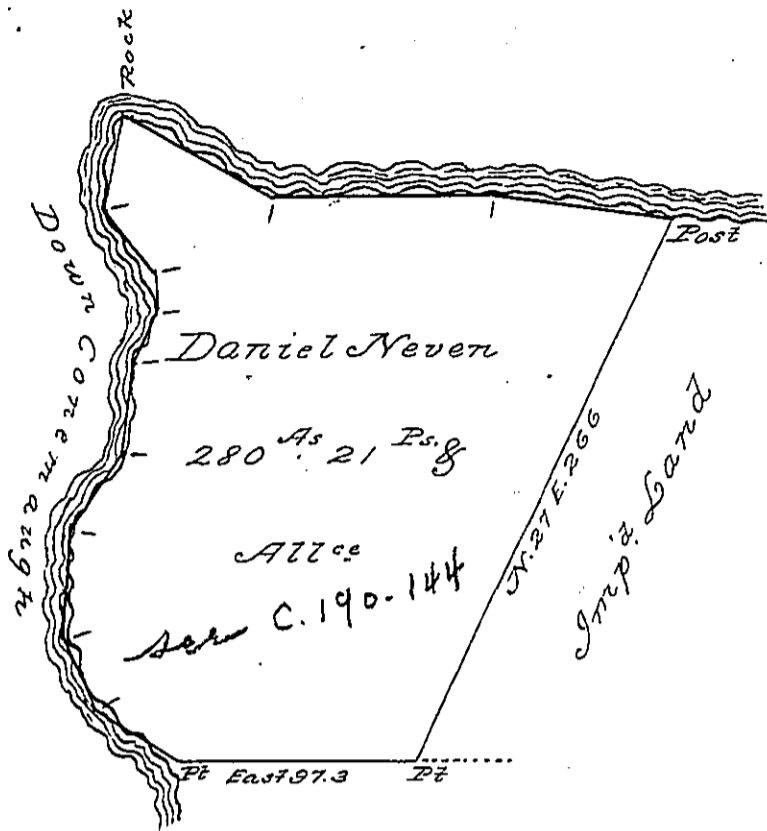


Courses & Dist^s down
Conemaugh from pt.

- N. 82 W. 77
- West 96
- N. 63 W. 70
- S. 13 W. 40
- S. 37 E. 30
- South 14
- S. 20 W. 28
- S. 6 W. 36
- S. 39 W. 38
- S. 3 W. 46
- S. 25 E. 37
- S. 45 E. 48 to the post



Robt King

C. 1 - 202

Ryder Esq
DETROIT

Situate on the Waters of Conemaugh, formerly
Bedford then Somerset, now Cambria County
Conemaugh Townshp. Containing 280^{As} 21^{perches}
& allow^t of Six^{pr.} C. & 8^{cs} first surveyed by George
Woods D. S. in 1794, in pursuance of a Warrant to
Daniel Neven dated 10th April A. D. 1794—

Resurveyed and examined this 3^d. day of Decr.
1830, by me

Wm O'Keefe D. S.

Jacob Spangler Esq. }
Surveyor Gen. }

IN TESTIMONY that the above is a copy of the original remaining on file in the
Department of Internal Affairs of Pennsylvania, made con-
formably to an Act of Assembly approved the 16th day of
February, 1833, I have hereunto set my Hand and caused
the Seal of said Department to be affixed at Harrisburg, this

Third day of November 1896

James W. Patton
Secretary of Internal Affairs.

in
nd
pr.
min
of a
seventh
ed mid
w
l
nce
ed lgs.
cluds
D. S.
e in the
ide con-
day of
caused
rg, this
1896
Affairs.